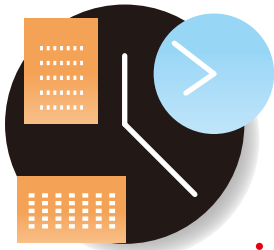
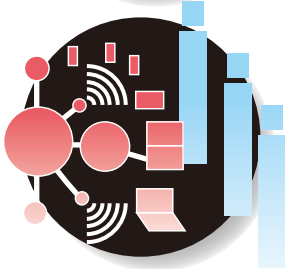
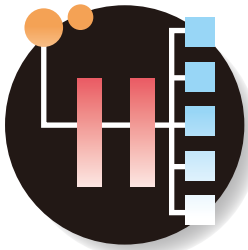


DOT Communication Co., Ltd.

Your IT and Media Solution Company
for Turnkey Communication Networks

DOT Communication's
Hotel Guest Network Solution
supports hotel staff and
guest HSIA around the clock



Our IT Services

1 Network Integration

- Wired and Wireless network integration.
- Solutions for guest rooms, back-office, IPTV & VoD, and surveillance camera and sensor systems.
- Temporary installations and on-site support for conventions

2 Hotel Gateway Operation

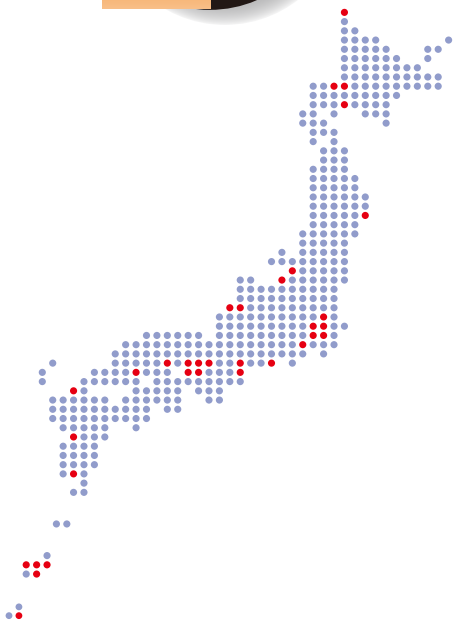
- HSIA gateway for authentication and PMS (billing) integration.
- Connecting to the Internet and virtual private networks (VPNs) does not require any changes to the guest device.

3 24 x 7 x 365 Call Center and Onsite Support

- Around the clock monitoring: Application and Bandwidth Control and Access Point Control .
- Japanese, English, Chinese, Korean native speakers to support hotel guests located locally in Tokyo.

Some of our Valued Customers

- | | |
|-----------------------------------|---------------------------------|
| ■ Hyatt Regency Tokyo | ■ Cerulean Tower Tokyo |
| ■ Imperial Hotel Tokyo | ■ ANA Intercontinental Tokyo |
| ■ Yokohama Bay Sheraton | ■ ANA Crown Plaza Osaka |
| ■ Yokohama Grand Intercontinental | ■ Nikko Hotel Osaka |
| ■ Imperial Hotel Osaka | ■ Nikko Hotel Kansai Airport |
| ■ Intercontinental Osaka | ■ Nagoya Marriott Associa Hotel |
| ■ ANA Crown Plaza Chitose | ■ ANA Intercontinental Manza |
| ■ Niseko Northern Resort | ■ Laguna Garden Hotel |



Company Profile

DOT Communication Works Co., Ltd.

Establishment: September 3rd, 2003

Capital: 50,000,000 yen

Management:

Soichi Ono, Chairman, Chief Financial Officer

Yasutaka Kubayashi, President, Chief Executive Officer

Toru Ishii, Chief Technology Officer

Address 3F 10th Ono Bldg. 6-13-4 Toyotamakita, Nerima, Tokyo, Japan

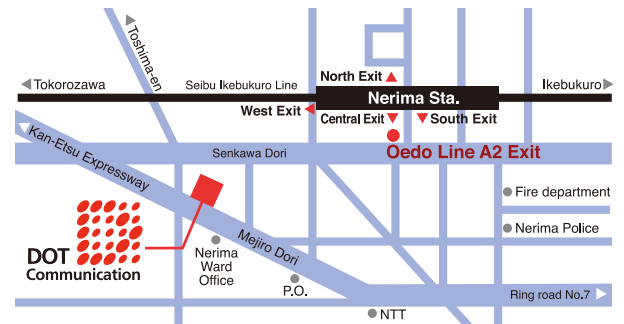
TEL: +81-3-5912-5341

FAX: +81-3-5912-5346

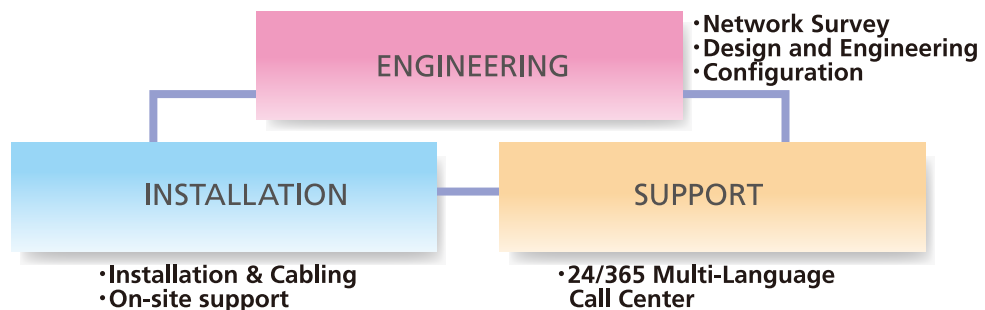
URL: www.dotcomm.jp

Business:

1. IT network system integration
2. IT network monitoring and operation
3. Multi-language help desk management
4. IT product development
5. IT consulting



DOT Formation



Our Partners: Linked to Technical Partners World Wide



<http://www.dotcomm.jp/>

To create communication